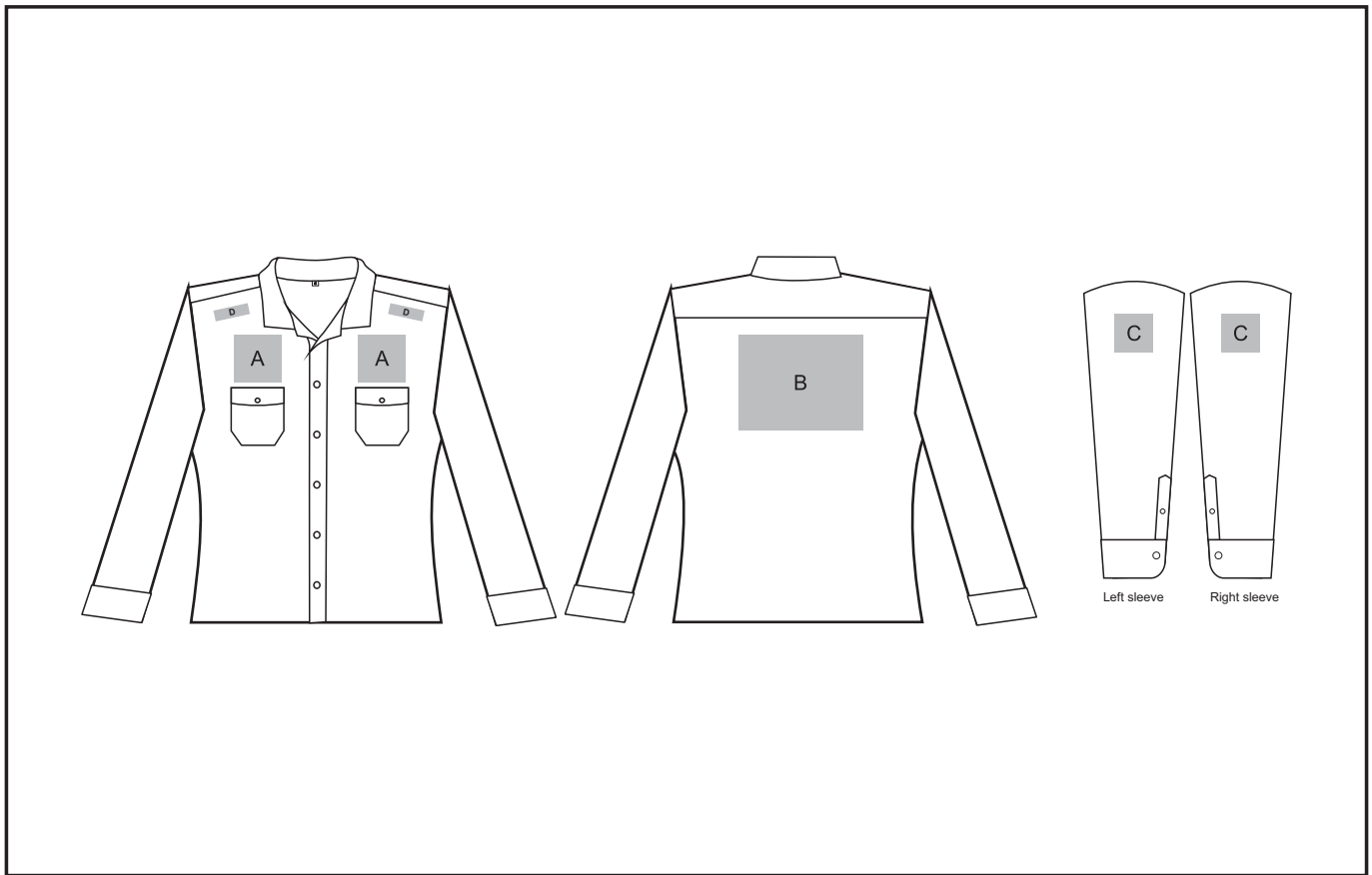


# BAS-7769

## Windsor Long Sleeve Shirt - Ladies



### Need to know:

- Includes 1-Position Embroidery **OR** 1-Position Digital Transfer (setup fee applies)
- **EMB/DTC inclusive parameters:** Left/Right Chest = 100mm x 100mm **OR** Back = 8000mm<sup>2</sup>
- Cannot guarantee a 100% straight branding on any clothing item with check or stripe detail.
- Please note Pos D will be branded +/- 20mm from the top seam

### Branding Options:

#### **Position A**

1. Embroidery (EMB) - 9 colours  
Size: 100mm diameter
2. Screen Print (SA) - 6 colours  
Size: 100mm wide x 80mm high
3. Digital Transfer Clothing (DTC) - Full colour  
Size: 100mm wide x 100mm high

#### **Position B**

1. Embroidery (EMB) - 9 colours  
Size: 200mm wide x 200mm high
2. Screen Print (SA) - 6 colours  
Size: 260mm wide x 200mm high
3. Digital Transfer Clothing (DTC) - Full colour  
Size: 210mm wide x 148mm high

#### **Position C**

1. Embroidery (EMB) - 9 colours  
Size: 80mm diameter
2. Screen Print (SA) - 6 colours  
Size: 60mm wide x 60mm high
3. Digital Transfer Clothing (DTC) - Full colour  
Size: 80mm wide x 80mm high

#### **Position D**

1. Digital Transfer Clothing (DTC) - Full Colour  
Size: 70mm wide x 20mm high